

Douglas St between Lily Ave and Dieppe Rd

March 11, 2019 To March 15, 2019



The data presented here is for information purposes only and should not be considered authoritative for construction, geotechnical, engineering, navigational, legal, or other site-specific uses. The information shared is owned by the Transportation Division of the Engineering Department at the District of Saanich. Accuracy is not guaranteed.

Start Date: 11-Mar-19
 Start Time: 0:03
 Station ID: C0019-02

Location 1: Douglas St between Lily Ave and Dieppe Rd
 Note: Lily Ave and Dieppe Rd

DATE:	March 11, 2019		March 12, 2019		March 13, 2019		March 14, 2019		March 15, 2019		WK AVG		WK AVG	HOURLY
	MON		TUE		WED		THURS		FRI		CH 1+2		%	
Time:	NB	SB	NB	SB	NB	SB	NB	SB	NB	SB	NB	SB		
12-1 AM			2	6	1	1	7	3			3	3	7	1.0%
1-2 AM			2	0	3	1	1	1			2	1	3	0.4%
2-3 AM			3	1	0	0	1	1			1	1	2	0.3%
3-4 AM			3	0	2	1	1	0			2	0	2	0.3%
4-5 AM			6	4	7	2	9	3			7	3	10	1.5%
5-6 AM			5	8	5	7	4	10			5	8	13	1.9%
6-7 AM			8	11	12	13	12	15			11	13	24	3.5%
7-8 AM			19	24	17	19	19	20			18	21	39	5.8%
8-9 AM			24	22	19	32	18	33			20	29	49	7.3%
9-10 AM			12	23	20	31	21	25			18	26	44	6.5%
10-11 AM			10	11	19	15	14	20			14	15	30	4.4%
11-12 PM			17	28	21	20	14	16			17	21	39	5.7%
12-1 PM			14	21	22	22	25	25			20	23	43	6.4%
1-2 PM			14	24	13	26	24	20			17	23	40	6.0%
2-3 PM			23	22	20	28	14	18			19	23	42	6.2%
3-4 PM			23	31	20	25	22	29			22	28	50	7.4%
4-5 PM			30	28	28	28	25	29			28	28	56	8.3%
5-6 PM			20	27	33	32	18	34			24	31	55	8.1%
6-7 PM			13	21	14	20	19	18			15	20	35	5.2%
7-8 PM			10	18	12	16	13	22			12	19	30	4.5%
8-9 PM			16	8	9	7	9	14			11	10	21	3.1%
9-10 PM			11	7	16	10	6	5			11	7	18	2.7%
10-11 PM			4	6	8	9	11	11			8	9	16	2.4%
11-12 AM			2	5	3	2	3	3			3	3	6	0.9%
LANES			291	356	324	367	310	375			308	366	674	100.0%
TOTAL			647		691		685				680			
	MON		TUE		WED		THURS		FRI		WK AVG			

PEAK HOUR					TOTAL VEHICALS-PEAK PERIODS		2 HOUR PEAK INTERVALS				
MAX. 7 - 9 am PEAK HOUR	49	⇒	7.3%	between 8-9 AM	281	⇒	6 HR TOTAL	2 HR AM (7 - 9 AM)			
MAX. 7 - 11 am PEAK HOUR	49	⇒	7.3%	between 8-9 AM	199	⇒	4 HR TOTAL	VEH / HR	VEH / 2HR	2 HR %	
MAX. 11 am - 1 pm PEAK HOUR	43	⇒	6.4%	between 12-1 PM				7-8 AM	39	89	13.1%
MAX. 11 am - 3 pm PEAK HOUR	43	⇒	6.4%	between 12-1 PM				8-9 AM	49		
MAX. 4 - 6 pm PEAK HOUR	56	⇒	8.3%	between 4-5 PM				2 HR NOON (11 - 1 PM)			
MAX. 3 - 6 pm PEAK HOUR	56	⇒	8.3%	between 4-5 PM				VEH / HR	VEH / 2HR	2 HR %	
					2.40	⇒	6-24 HR FACT.	11-12 PM	39	82	12.1%
					3.38	⇒	4-24 HR FACT.	12-1 PM	43		
								2 HR PM (4 - 6 PM)			
								VEH / HR	VEH / 2HR	2 HR %	
								4-5 PM	56	111	16.4%
								5-6 PM	55		

Douglas St between Lily Ave and Dieppe Rd

Northbound

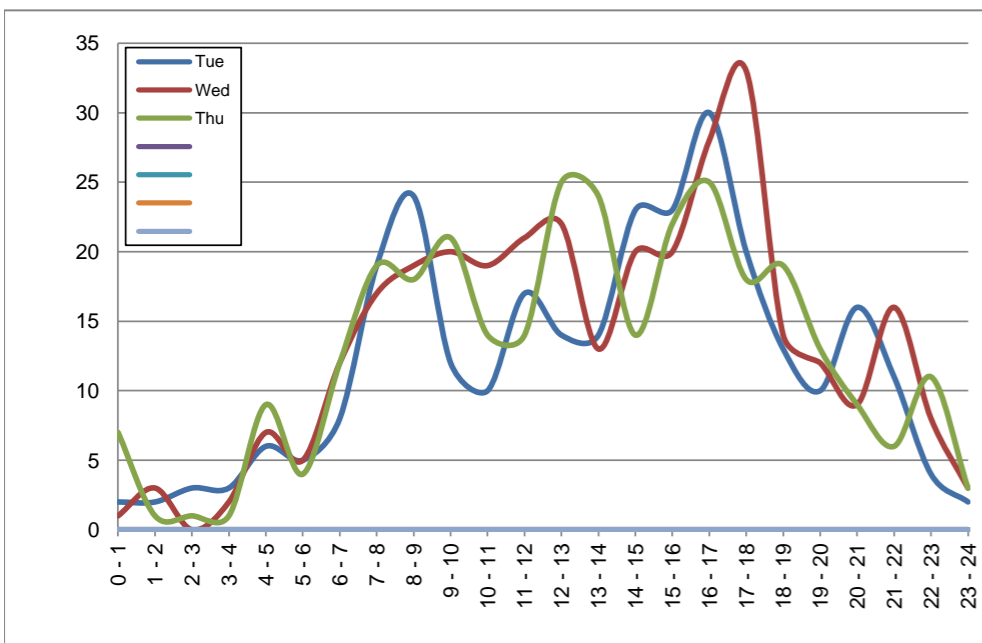
March 12, 2019 to March 14, 2019

Hourly Volumes

Time Period	Tue	Wed	Thu				
	Mar 12	Mar 13	Mar 14				
0 - 1	2	1	7				
1 - 2	2	3	1				
2 - 3	3	0	1				
3 - 4	3	2	1				
4 - 5	6	7	9				
5 - 6	5	5	4				
6 - 7	8	12	12				
7 - 8	19	17	19				
8 - 9	24	19	18				
9 - 10	12	20	21				
10 - 11	10	19	14				
11 - 12	17	21	14				
12 - 13	14	22	25				
13 - 14	14	13	24				
14 - 15	23	20	14				
15 - 16	23	20	22				
16 - 17	30	28	25				
17 - 18	20	33	18				
18 - 19	13	14	19				
19 - 20	10	12	13				
20 - 21	16	9	9				
21 - 22	11	16	6				
22 - 23	4	8	11				
23 - 24	2	3	3				
Day Total	291	324	310				

15-Minute Volumes

Time Start	Tue	Wed	Thu				
	Mar 12	Mar 13	Mar 14				
0:00	0	0	1				
0:15	0	1	3				
0:30	1	0	2				
0:45	1	0	1				
1:00	0	1	0				
1:15	1	1	1				
1:30	0	1	0				
1:45	1	0	0				
2:00	2	0	0				
2:15	1	0	1				
2:30	0	0	0				
2:45	0	0	0				
3:00	0	1	0				
3:15	2	0	1				
3:30	0	1	0				
3:45	1	0	0				
4:00	1	1	1				
4:15	1	1	0				
4:30	0	1	3				
4:45	4	4	5				
5:00	2	2	0				
5:15	2	0	1				
5:30	0	1	1				
5:45	1	2	2				
6:00	0	2	0				
6:15	3	2	5				
6:30	2	4	4				
6:45	3	4	3				
7:00	3	4	7				
7:15	5	2	2				
7:30	4	7	4				
7:45	7	4	6				
8:00	3	2	2				
8:15	8	5	9				
8:30	8	8	3				
8:45	5	4	4				
9:00	5	4	3				
9:15	1	5	2				
9:30	4	5	9				
9:45	2	6	7				
10:00	2	1	3				
10:15	4	4	5				
10:30	1	9	2				
10:45	3	5	4				
11:00	5	3	2				
11:15	4	5	2				
11:30	3	3	5				
11:45	5	10	5				
12:00	4	6	7				
12:15	1	5	7				
12:30	5	5	8				
12:45	4	6	3				
13:00	5	3	6				
13:15	4	2	5				
13:30	3	4	7				
13:45	2	4	6				
14:00	4	5	7				
14:15	4	8	2				
14:30	7	5	1				
14:45	8	2	4				
15:00	5	5	8				
15:15	7	3	6				
15:30	8	9	5				
15:45	3	3	3				
16:00	8	6	3				
16:15	10	6	3				
16:30	7	5	9				
16:45	5	11	10				
17:00	6	9	5				
17:15	6	11	8				
17:30	3	11	2				
17:45	5	2	3				
18:00	4	5	4				
18:15	4	3	6				
18:30	4	2	3				
18:45	1	4	6				
19:00	4	3	7				
19:15	2	3	2				
19:30	3	3	3				
19:45	1	3	1				
20:00	5	3	1				
20:15	3	1	2				
20:30	3	2	2				
20:45	5	3	4				
21:00	2	5	1				
21:15	4	3	2				
21:30	2	5	3				
21:45	3	3	0				
22:00	1	2	3				
22:15	1	3	1				
22:30	2	1	3				
22:45	0	2	4				
23:00	0	1	1				
23:15	1	1	2				
23:30	0	1	0				
23:45	1	0	0				



Site notes:

Douglas St between Lily Ave and Dieppe Rd

Southbound

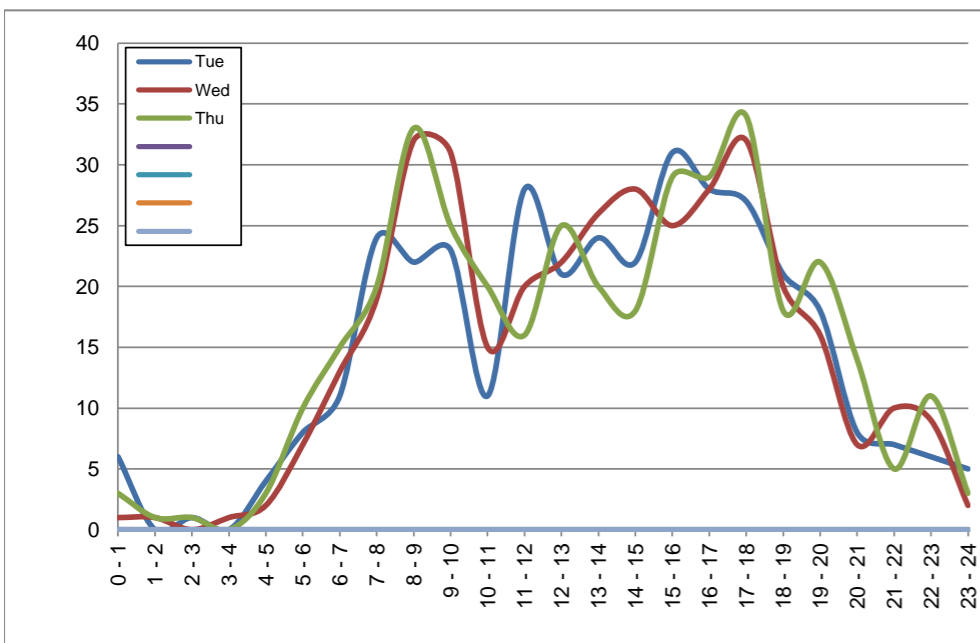
March 12, 2019 to March 14, 2019

Hourly Volumes

Time Period	Tue	Wed	Thu				
	Mar 12	Mar 13	Mar 14				
0 - 1	6	1	3				
1 - 2	0	1	1				
2 - 3	1	0	1				
3 - 4	0	1	0				
4 - 5	4	2	3				
5 - 6	8	7	10				
6 - 7	11	13	15				
7 - 8	24	19	20				
8 - 9	22	32	33				
9 - 10	23	31	25				
10 - 11	11	15	20				
11 - 12	28	20	16				
12 - 13	21	22	25				
13 - 14	24	26	20				
14 - 15	22	28	18				
15 - 16	31	25	29				
16 - 17	28	28	29				
17 - 18	27	32	34				
18 - 19	21	20	18				
19 - 20	18	16	22				
20 - 21	8	7	14				
21 - 22	7	10	5				
22 - 23	6	9	11				
23 - 24	5	2	3				
Day Total	356	367	375				

15-Minute Volumes

Time Start	Tue	Wed	Thu				
	Mar 12	Mar 13	Mar 14				
0:00	4	0	1				
0:15	2	1	2				
0:30	0	0	0				
0:45	0	0	0				
1:00	0	0	1				
1:15	0	1	0				
1:30	0	0	0				
1:45	0	0	0				
2:00	0	0	0				
2:15	0	0	0				
2:30	1	0	0				
2:45	0	0	1				
3:00	0	0	0				
3:15	0	1	0				
3:30	0	0	0				
3:45	0	0	0				
4:00	1	0	0				
4:15	0	0	1				
4:30	0	2	1				
4:45	3	0	1				
5:00	0	1	4				
5:15	5	5	4				
5:30	3	0	1				
5:45	0	1	1				
6:00	1	2	0				
6:15	2	4	6				
6:30	4	4	4				
6:45	4	3	5				
7:00	6	7	5				
7:15	7	3	5				
7:30	4	5	6				
7:45	7	4	4				
8:00	4	8	9				
8:15	7	7	12				
8:30	5	9	9				
8:45	6	8	3				
9:00	8	8	6				
9:15	8	13	5				
9:30	1	6	5				
9:45	6	4	9				
10:00	2	5	8				
10:15	2	3	7				
10:30	3	4	2				
10:45	4	3	3				
11:00	2	4	6				
11:15	7	6	2				
11:30	8	1	2				
11:45	11	9	6				
12:00	7	5	8				
12:15	6	5	7				
12:30	4	5	5				
12:45	4	7	5				
13:00	4	7	6				
13:15	4	6	5				
13:30	9	5	5				
13:45	7	8	4				
14:00	2	7	2				
14:15	3	6	7				
14:30	9	6	4				
14:45	8	9	5				
15:00	9	4	7				
15:15	4	6	5				
15:30	8	6	6				
15:45	10	9	11				
16:00	7	8	8				
16:15	6	6	7				
16:30	10	10	4				
16:45	5	4	10				
17:00	7	8	8				
17:15	7	11	11				
17:30	7	6	10				
17:45	6	7	5				
18:00	0	5	3				
18:15	8	8	7				
18:30	6	5	3				
18:45	7	2	5				
19:00	4	3	5				
19:15	7	4	9				
19:30	0	6	5				
19:45	7	3	3				
20:00	2	1	3				
20:15	2	3	3				
20:30	4	0	4				
20:45	0	3	4				
21:00	2	3	0				
21:15	3	3	3				
21:30	2	2	1				
21:45	0	2	1				
22:00	1	1	6				
22:15	2	3	3				
22:30	2	2	1				
22:45	1	3	1				
23:00	2	0	2				
23:15	3	0	1				
23:30	0	2	0				
23:45	0	0	0				



Site notes:

Vehicle Speed Summary

Saanich Engineering Department

Count Id: C0019-02

Filename: Douglas St between Lily Ave and Dieppe Rd-Mar-2019.xlsm

Location: Douglas St between Lily Ave and Dieppe Rd

Note: Lily Ave and Dieppe Rd

Direction: **North-South**

Dates: **March 11, 2019 To March 15, 2019**

Filtered data

AVG. SPEED	30 mph	48 km/h
50 % SPEED	31 mph	49 km/h
85 % SPEED	37 mph	60 km/h
95 % SPEED	41 mph	67 km/h

Location Map



Douglas St between Lily Ave and Dieppe Rd

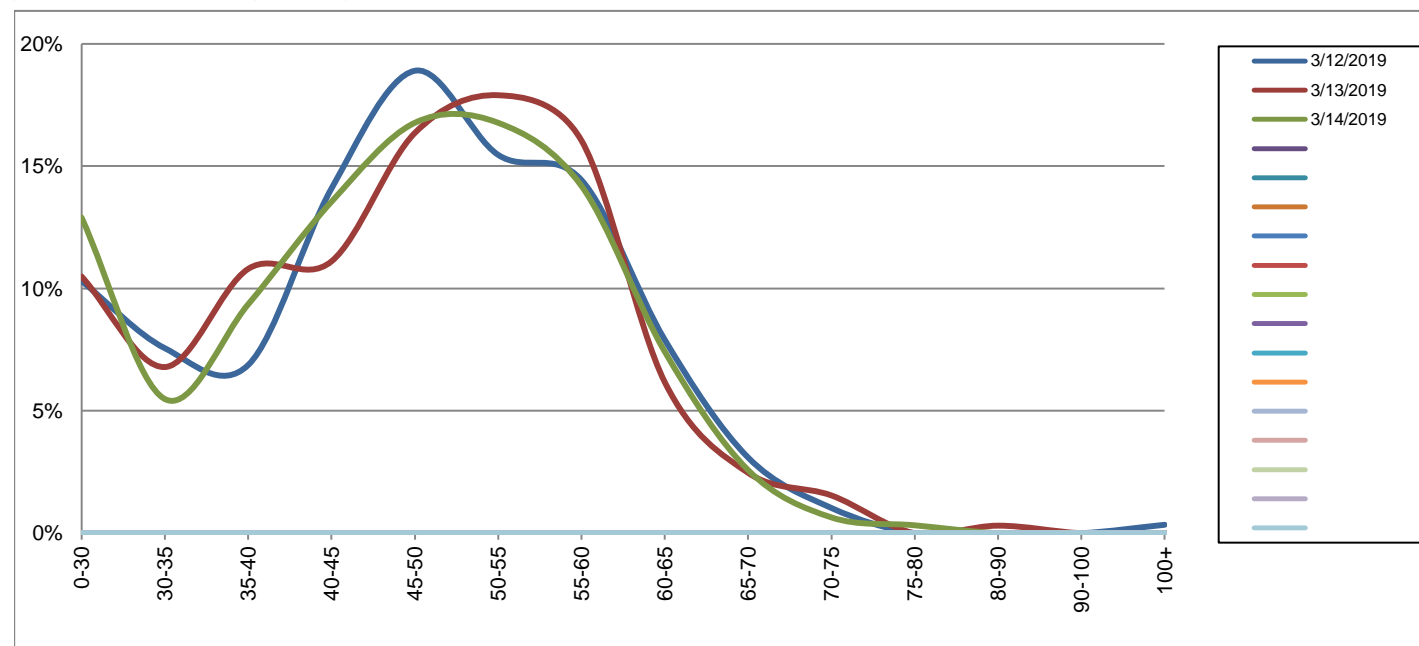
Northbound

March 12, 2019 to March 14, 2019

Daily Speed Bin Percentages															Daily Speed Bin Volumes														Total	Avg. Speed
Bin #	1	2	3	4	5	6	7	8	9	10	11	12	13	14	1	2	3	4	5	6	7	8	9	10	11	12	13	14		
Bin Speeds	0-30	30-35	35-40	40-45	45-50	50-55	55-60	60-65	65-70	70-75	75-80	80-90	90-100	100+	0-30	30-35	35-40	40-45	45-50	50-55	55-60	60-65	65-70	70-75	75-80	80-90	90-100	100+	Volume	Speed
3/12/2019	10.3%	7.6%	6.9%	14.1%	18.9%	15.5%	14.4%	7.9%	3.1%	1.0%	0.0%	0.0%	0.0%	0.3%	30	22	20	41	55	45	42	23	9	3	0	0	0	1	291	46
3/13/2019	10.5%	6.8%	10.8%	11.1%	16.4%	17.9%	16.0%	6.2%	2.5%	1.5%	0.0%	0.3%	0.0%	0.0%	34	22	35	36	53	58	52	20	8	5	0	1	0	0	324	46
3/14/2019	12.9%	5.5%	9.4%	13.5%	16.8%	16.8%	14.2%	7.4%	2.6%	0.6%	0.3%	0.0%	0.0%	0.0%	40	17	29	42	52	52	44	23	8	2	1	0	0	0	310	45
Total	11.2%	6.6%	9.1%	12.9%	17.3%	16.8%	14.9%	7.1%	2.7%	1.1%	0.1%	0.1%	0.0%	0.1%	104	61	84	119	160	155	138	66	25	10	1	1	0	1	925	46

Speed Data Summary

Bin #	1	2	3	4	5	6	7	8	9	10	11	12	13	14	Total
Bin Speeds	0-30	30-35	35-40	40-45	45-50	50-55	55-60	60-65	65-70	70-75	75-80	80-90	90-100	100+	
Survey Total	104	61	84	119	160	155	138	66	25	10	1	1	0	1	925
% Total	11.2%	6.6%	9.1%	12.9%	17.3%	16.8%	14.9%	7.1%	2.7%	1.1%	0.1%	0.1%	0.0%	0.1%	100%
Accumulated %	11.2%	17.8%	26.9%	39.8%	57.1%	73.8%	88.8%	95.9%	98.6%	99.7%	99.8%	99.9%	99.9%	100%	
Inverse Accum. %	88.8%	82.2%	73.1%	60.2%	42.9%	26.2%	11.2%	4.1%	1.4%	0.3%	0.2%	0.1%	0.1%	0.0%	
Average Speed	46 KM/H														



Site notes:

Douglas St between Lily Ave and Dieppe Rd

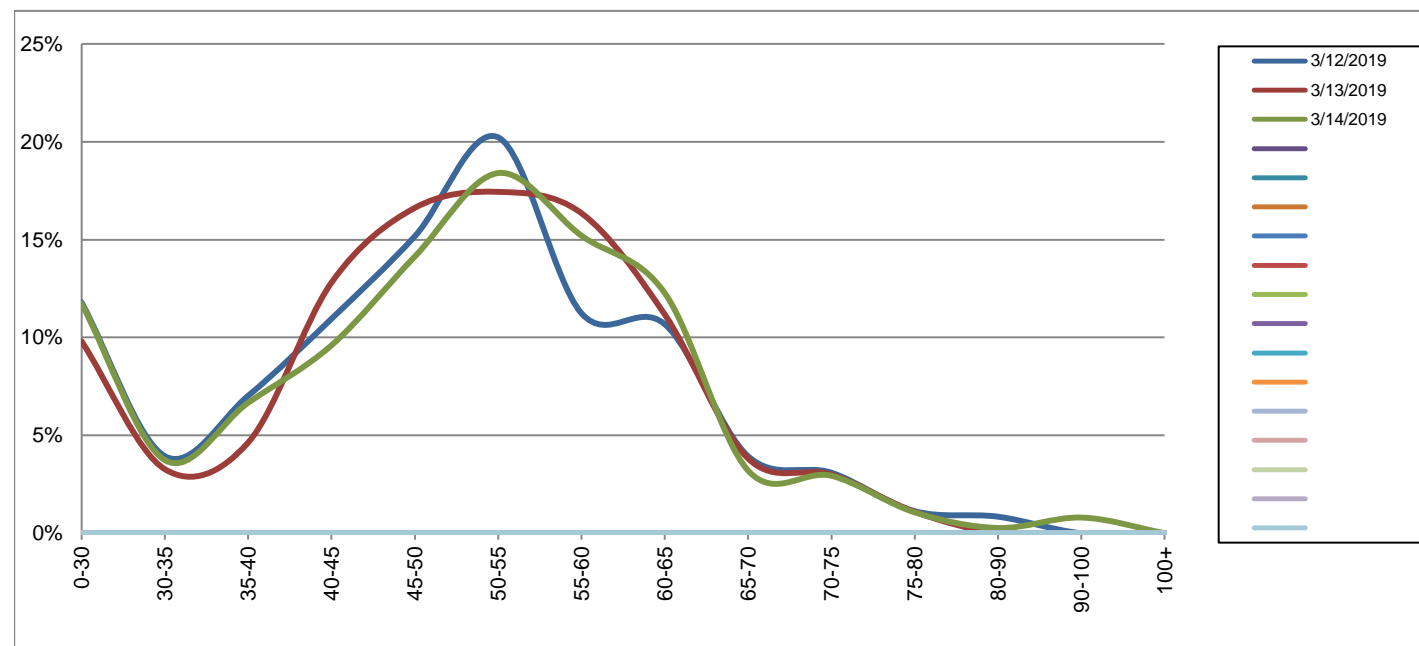
Southbound

March 12, 2019 to March 14, 2019

Daily Speed Bin Percentages															Daily Speed Bin Volumes														Total	Avg.
Bin #	1	2	3	4	5	6	7	8	9	10	11	12	13	14	1	2	3	4	5	6	7	8	9	10	11	12	13	14	Volume	Speed
Bin Speeds	0-30	30-35	35-40	40-45	45-50	50-55	55-60	60-65	65-70	70-75	75-80	80-90	90-100	100+	0-30	30-35	35-40	40-45	45-50	50-55	55-60	60-65	65-70	70-75	75-80	80-90	90-100	100+		
3/12/2019	11.8%	3.9%	7.0%	11.0%	15.2%	20.2%	11.2%	10.7%	3.9%	3.1%	1.1%	0.8%	0.0%	0.0%	42	14	25	39	54	72	40	38	14	11	4	3	0	0	356	48
3/13/2019	9.8%	3.3%	4.6%	12.8%	16.6%	17.4%	16.3%	11.2%	3.8%	3.0%	1.1%	0.0%	0.0%	0.0%	36	12	17	47	61	64	60	41	14	11	4	0	0	0	367	49
3/14/2019	11.7%	3.7%	6.7%	9.6%	14.1%	18.4%	15.2%	12.3%	3.2%	2.9%	1.1%	0.3%	0.8%	0.0%	44	14	25	36	53	69	57	46	12	11	4	1	3	0	375	48
Total	11.1%	3.6%	6.1%	11.1%	15.3%	18.7%	14.3%	11.4%	3.6%	3.0%	1.1%	0.4%	0.3%	0.0%	122	40	67	122	168	205	157	125	40	33	12	4	3	0	1098	48

Speed Data Summary

Bin #	1	2	3	4	5	6	7	8	9	10	11	12	13	14	Total
Bin Speeds	0-30	30-35	35-40	40-45	45-50	50-55	55-60	60-65	65-70	70-75	75-80	80-90	90-100	100+	
Survey Total	122	40	67	122	168	205	157	125	40	33	12	4	3	0	1098
% Total	11.1%	3.6%	6.1%	11.1%	15.3%	18.7%	14.3%	11.4%	3.6%	3.0%	1.1%	0.4%	0.3%	0.0%	100%
Accumulated %	11.1%	14.8%	20.9%	32.0%	47.3%	65.9%	80.2%	91.6%	95.3%	98.3%	99.4%	99.7%	100.0%	100%	
Inverse Accum. %	88.9%	85.2%	79.1%	68.0%	52.7%	34.1%	19.8%	8.4%	4.7%	1.7%	0.6%	0.3%	0.0%	0.0%	
Average Speed	48 KM/H														



Site notes:

Douglas St between Lily Ave and Dieppe Rd

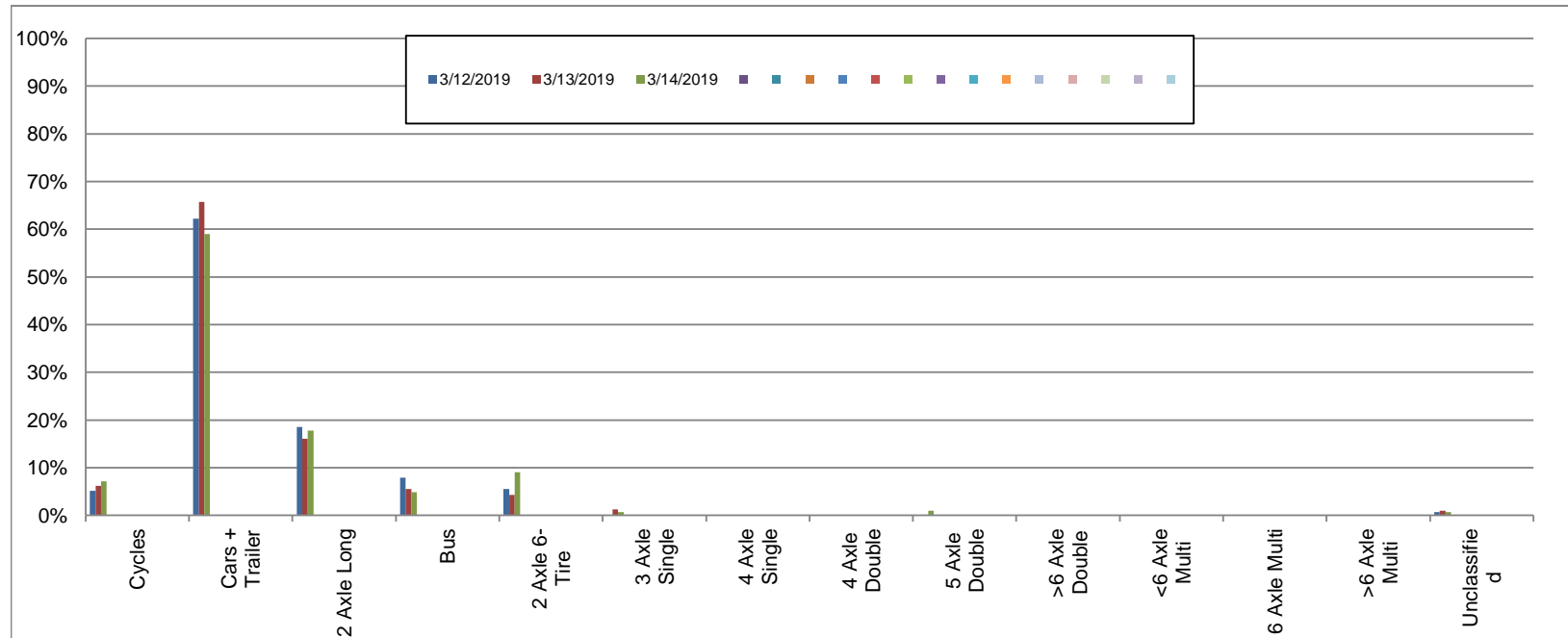
Northbound

March 12, 2019 to March 14, 2019

Daily Class Bin Percentages															Daily Class Bin Volumes														Total Volume	
Bin #	1	2	3	4	5	6	7	8	9	10	11	12	13	14	1	2	3	4	5	6	7	8	9	10	11	12	13	14		
Bin Class	Cycles	Cars + Trailer	2 Axle Long	Bus	2 Axle 6-Tire	3 Axle Single	4 Axle Single	4 Axle Double	5 Axle Double	>6 Axle Double	<6 Axle Multi	6 Axle Multi	>6 Axle Multi	Unclassified	Cycles	Cars + Trailer	2 Axle Long	Bus	2 Axle 6-Tire	3 Axle Single	4 Axle Single	4 Axle Double	5 Axle Double	>6 Axle Double	<6 Axle Multi	6 Axle Multi	>6 Axle Multi	Unclassified		
3/12/2019	5.2%	62.2%	18.6%	7.9%	5.5%	0.0%	0.0%	0.0%	0.0%	0.0%	0.0%	0.0%	0.0%	0.7%	15	181	54	23	16	0	0	0	0	0	0	0	0	0	2	291
3/13/2019	6.2%	65.7%	16.0%	5.6%	4.3%	1.2%	0.0%	0.0%	0.0%	0.0%	0.0%	0.0%	0.0%	0.9%	20	213	52	18	14	4	0	0	0	0	0	0	0	0	3	324
3/14/2019	7.1%	59.0%	17.7%	4.8%	9.0%	0.6%	0.0%	0.0%	1.0%	0.0%	0.0%	0.0%	0.0%	0.6%	22	183	55	15	28	2	0	0	3	0	0	0	0	0	2	310
Total	6.2%	62.4%	17.4%	6.1%	6.3%	0.6%	0.0%	0.0%	0.3%	0.0%	0.0%	0.0%	0.0%	0.8%	57	577	161	56	58	6	0	0	3	0	0	0	0	7	925	

Class Data Summary

Bin #	1	2	3	4	5	6	7	8	9	10	11	12	13	14	Total Volume
Bin Class	Cycles	Cars + Trailer	2 Axle Long	Bus	2 Axle 6-Tire	3 Axle Single	4 Axle Single	4 Axle Double	5 Axle Double	>6 Axle Double	<6 Axle Multi	6 Axle Multi	>6 Axle Multi	Unclassified	Total Volume
Survey Total	57	577	161	56	58	6	0	0	3	0	0	0	0	7	925
% Total	6.2%	62.4%	17.4%	6.1%	6.3%	0.6%	0.0%	0.0%	0.3%	0.0%	0.0%	0.0%	0.0%	0.8%	100%
Accumulated %	6.2%	68.5%	85.9%	92.0%	98.3%	98.9%	98.9%	98.9%	99.2%	99.2%	99.2%	99.2%	99.2%	100.0%	
Inv. Accum. %	93.8%	31.5%	14.1%	8.0%	1.7%	1.1%	1.1%	1.1%	0.8%	0.8%	0.8%	0.8%	0.8%	0.0%	



Classification Descriptions

Bin #	Bin Description
1	Motorcycles
2	Passenger cars, including those with recreational trailers
3	2-axle pick-ups, vans, and RVs, including those with recreational trailers
4	Buses
5	2-axle, 6-tire single units
6	3-axle single units
7	4-axle single units
8	3-axle or 4-axle double unit
9	5-axle double unit
10	6-, 7-, or 8-axle double unit
11	5-axle multiple unit
12	6-axle multiple unit
13	7-or-more-axle multiple unit
14	Vehicles that could not be classified

Site notes:

Douglas St between Lily Ave and Dieppe Rd

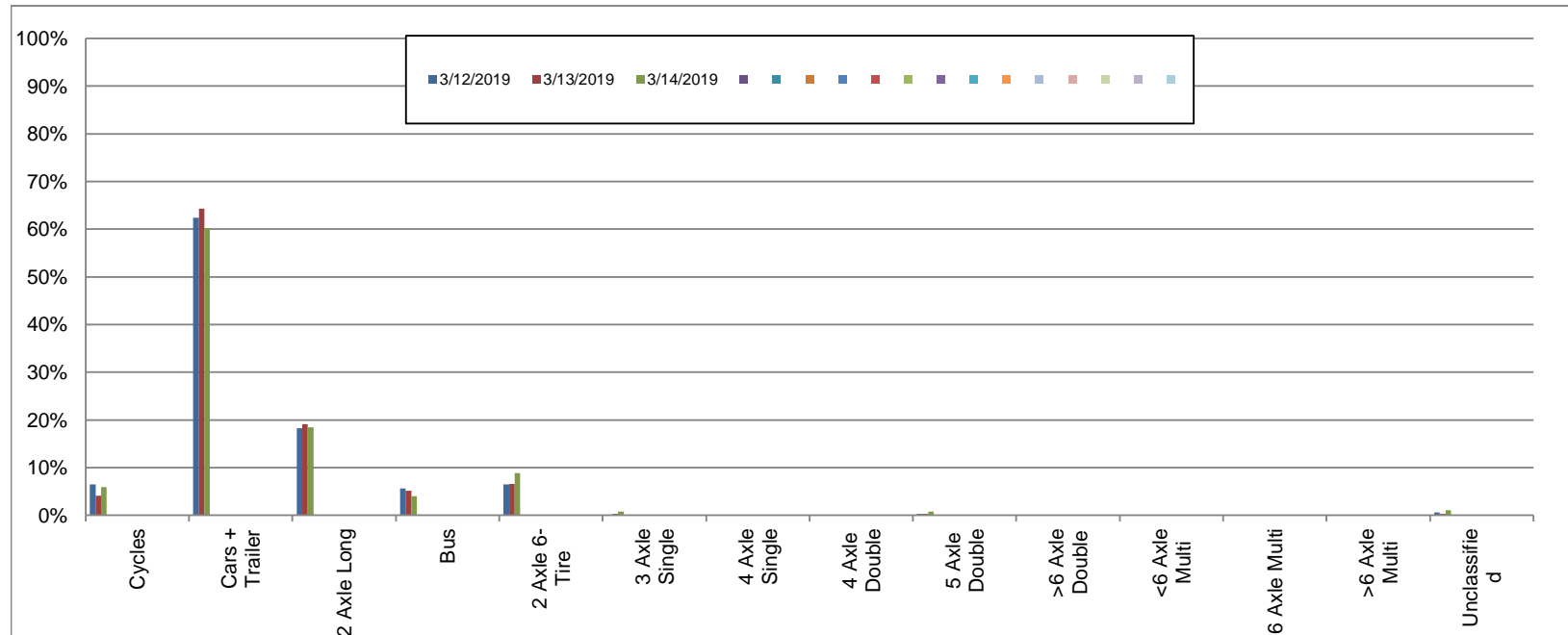
Southbound

March 12, 2019 to March 14, 2019

Daily Class Bin Percentages															Daily Class Bin Volumes															
Bin #	1	2	3	4	5	6	7	8	9	10	11	12	13	14	1	2	3	4	5	6	7	8	9	10	11	12	13	14	Total Volume	
Bin Class	Cycles	Cars + Trailer	2 Axle Long	Bus	2 Axle 6-Tire	3 Axle Single	4 Axle Single	4 Axle Double	5 Axle Double	>6 Axle Double	<6 Axle Multi	6 Axle Multi	>6 Axle Multi	Unclassified	Cycles	Cars + Trailer	2 Axle Long	Bus	2 Axle 6-Tire	3 Axle Single	4 Axle Single	4 Axle Double	5 Axle Double	>6 Axle Double	<6 Axle Multi	6 Axle Multi	>6 Axle Multi	Unclassified		
3/12/2019	6.5%	62.4%	18.3%	5.6%	6.5%	0.0%	0.0%	0.0%	0.3%	0.0%	0.0%	0.0%	0.0%	0.6%	23	222	65	20	23	0	0	0	0	1	0	0	0	0	2	356
3/13/2019	4.1%	64.3%	19.1%	5.2%	6.5%	0.3%	0.0%	0.0%	0.3%	0.0%	0.0%	0.0%	0.0%	0.3%	15	236	70	19	24	1	0	0	0	1	0	0	0	0	1	367
3/14/2019	5.9%	60.3%	18.4%	4.0%	8.8%	0.8%	0.0%	0.0%	0.8%	0.0%	0.0%	0.0%	0.0%	1.1%	22	226	69	15	33	3	0	0	0	3	0	0	0	0	4	375
Total	5.5%	62.3%	18.6%	4.9%	7.3%	0.4%	0.0%	0.0%	0.5%	0.0%	0.0%	0.0%	0.0%	0.6%	60	684	204	54	80	4	0	0	5	0	0	0	0	7	1098	

Class Data Summary

Bin #	1	2	3	4	5	6	7	8	9	10	11	12	13	14	Total Volume
Bin Class	Cycles	Cars + Trailer	2 Axle Long	Bus	2 Axle 6-Tire	3 Axle Single	4 Axle Single	4 Axle Double	5 Axle Double	>6 Axle Double	<6 Axle Multi	6 Axle Multi	>6 Axle Multi	Unclassified	Total Volume
Survey Total	60	684	204	54	80	4	0	0	5	0	0	0	0	7	1098
% Total	5.5%	62.3%	18.6%	4.9%	7.3%	0.4%	0.0%	0.0%	0.5%	0.0%	0.0%	0.0%	0.0%	0.6%	100%
Accumulated %	5.5%	67.8%	86.3%	91.3%	98.5%	98.9%	98.9%	98.9%	99.4%	99.4%	99.4%	99.4%	99.4%	100.0%	
Inv. Accum. %	94.5%	32.2%	13.7%	8.7%	1.5%	1.1%	1.1%	1.1%	0.6%	0.6%	0.6%	0.6%	0.6%	0.0%	



Classification Descriptions

Bin #	Bin Description
1	Motorcycles
2	Passenger cars, including those with recreational trailers
3	2-axle pick-ups, vans, and RVs, including those with recreational trailers
4	Buses
5	2-axle, 6-tire single units
6	3-axle single units
7	4-axle single units
8	3-axle or 4-axle double unit
9	5-axle double unit
10	6-, 7-, or 8-axle double unit
11	5-axle multiple unit
12	6-axle multiple unit
13	7-or-more-axle multiple unit
14	Vehicles that could not be classified

Site notes: